



Warsash Sailing Club

Notice Of Race



BLAZE NATIONAL CHAMPIONSHIPS

Organising authority

WARSASH SAILING CLUB (WSC)

In conjunction with

BLAZE CLASS ASSOCIATION

Friday 9, Saturday 10 & Sunday 11 June 2023

Warsash, United Kingdom

NOTICE OF RACE

The notation '[NP]' in a rule means that a boat may not protest another boat for breaking that rule. This changes RRS 60.1 (a). The notation '[DP]' in a rule of the NOR or SI means that the penalty for breaching the rule is at the discretion of the protest committee and may be less than disqualification.

1 RULES

- 1.1 The event is governed by the rules as defined in The Racing Rules of Sailing (RRS).
- 1.2 RRS Appendix T is replaced with the RYA rules dispute procedure

Warsash Sailing Club

Shore House, Shore Road, Warsash, Southampton, SO31 9FS, UK

Tel: 01489 583575 Email: admin@warsashsc.org.uk Web: warsashsc.org.uk



- 1.3 [NP] Warsash Sailing Club implements the RYA Racing Charter available at <https://www.rya.org.uk/racing/rules/racing-charter>. Competitors shall undertake to sail in compliance with the charters.
- 1.4 [DP] Entrants and authorised guests are temporary members of WSC during the period of the event and shall, always, comply with the Club rules and bylaws. Failure to observe the rules may result in exclusion from WSC premises.
- 1.5 RRS 40.1 always applies while afloat.

2 SAILING INSTRUCTIONS

- 2.1 The sailing instructions will be published on the Warsash Sailing Club website www.warsashsc.org.uk/openevents/blaze by 17:00hrs on Wednesday 7 June.

3 COMMUNICATION

- 3.1 The official notice board will be in Shore House.

4 ELIGIBILITY AND ENTRY

- 4.1 The regatta is open to all Blaze, Fire and Halo boats sailed by members of the Blaze Class Association.
- 4.2 Eligible boats shall enter by completing the online entry form accessed via the WSC website www.warsashsc.org.uk/openevents/blaze paying the entry fee and completing the entry by midnight on Thursday 8 June. These fees include parking by competitors in Strawberry Fields (Charges are now due in the local car parks).
- 4.3 Late entries will be accepted up until 12:00hrs on Saturday 10 June, subject to a surcharge of £20.
- 4.4 Parent/Guardian Declarations: All helms and crews under 18 years of age during the event shall submit signed Parent/Guardian Declarations on-line as part of the entry process and submit details of the parent acting in charge of a child who shall be present at WSC at all times during the event.
- 4.5 Medical forms and sailor declarations included as part of the on-line entry are required to be completed for all competitors.

5 FEES

- 5.1 The Full Entry Fee for the event is £75 and shall be paid via the online payment system.

The following discounted fees have been made available as a result of the generous support of our Title Sponsors SEA SURE.

Very Early Bird – up to 28 February 2023 - £45

Early Bird – 1 March 2023 to 13 May 2023 - £55

Full – 14 May 2023 to 8 June 2023 - £75

6 IDENTIFICATION & ADVERTISING

- 6.1 [NP] [DP] When provided by the Organising Authority, boats shall display bow numbers and/or advertising.



7 EVENT SERIES

- 7.1 The regatta will consist of a single series.
- 7.2 The regatta forms part of the Blaze Traveller series, details of which can be found on the Class Association website.

8 SCHEDULE

- 8.1 Competitors and support boat crews are required to register in Shore House prior to racing on Friday 9 June (late entries received after racing on Friday are to register prior to racing on Saturday 10 June). Pre prepared race packs will be available from 09:00hrs on Friday 9 June.
- 8.2 Competitor Briefing: Event briefings will take place at Shore House at 10:30hrs on Friday 9 June, 10:00hrs on Saturday 10 June and 10:00hrs on Sunday 11 June. Any relevant notices will be posted on the event Notice Board at Shore House.
- 8.3 Format of Racing: It is intended to run 8 races over the three days. The intended format is as follows; this may be varied:

Day	First Warning Signal	Intended no. of races
Friday 9 June 2023	12:25hrs	3 races back-to-back
Saturday 10 June 2023	11:25hrs	3 races back-to-back
Sunday 11 June 2023	11:25hrs	2 races back-to-back

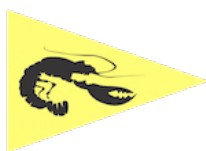
- 8.4 On the last scheduled day of racing no warning signal will be made after 15:00hrs.

9 EQUIPMENT INSPECTION

- 9.1 **Towline:** each boat shall carry a floating towline of at least 8mm diameter and 10 metres length. This must be accessible without breaching the integral buoyancy of the dinghy and must not have any attachments such as shackles or knots.
- 9.2 [DP] Boats, sails and equipment may be inspected for class rules compliance prior to or during or after racing.

10 VENUE

- 10.1 The venue will be Warsash Sailing Club, Shore Road, Warsash SO31 9FS.
- 10.2 NoR Addendum 1 shows the plan of the event venue.
- 10.3 NoR Addendum 2 shows the location of the racing areas.
- 10.4 The intended race area will be within Southampton Water/The Solent up to 2 miles from WSC in the vicinity of Solent Breezes to the East of the North channel. Boats are not expected to return ashore between races. The alternative race area at



Cathead close to the junction of the Hamble River and Southampton Water could be used.

11 COURSES

11.1 The Course(s) to be sailed will be detailed in the SIs.

12 PENALTY SYSTEM

12.1 The penalty system will be described in the SIs.

13 SCORING

13.1 Three races are required to be completed to constitute a series.

13.2 (a) When fewer than 4 races have been completed a boat's series score shall be the total of her race scores.

(b) When 4 - 7 races have been completed, a boats series score will be the total of her race score excluding her worst score.

(c) When 8 races have been completed, a boat's series score will be the total of her race scores excluding her two worst scores.

14 SUPPORT PERSON VESSELS

14.1 Support person vessels will be allowed and will be expected to act as part of the safety fleet if requested to do so by the Race Committee.

14.2 Official, patrol and support person vessels must be registered with WSC prior to the start of the first race and may be required to be marked with an appropriate coloured flag and shall comply with instructions from the event safety officer.

14.3 [DP] Team leaders, coaches and other support personnel including relatives of competitors who are not official, patrol or support person vessels shall not be in the racing area, nor shall they communicate with any competitors, from the time of the preparatory signal for the first race until the last boat returns to shore. The penalty for failing to comply with this requirement will be at the discretion of the protest committee and may be less than disqualification for all boats associated with the support personnel who do so.

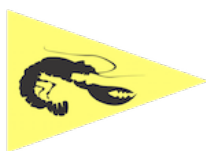
a) For the purposes of this rule, the racing area shall be defined as not less than 300m from any boat that is racing, and this shall specifically include an area not less than 200m immediately to leeward of the finish line for any race.

b) For events that are held in restricted waters where the requirements in 14.3 a) are unable to be met, the Race Officer may designate a specific area for team leaders, coaches, or support boats

14.4 Competitors will not be able to place food, drink, and spares on any support vessels.

15 BERTHING

15.1 [DP] Boats shall be kept in their assigned places in the Strawberry Fields or Club dinghy park for the duration of the regatta unless instructed otherwise.



16 DISTINGUISHING NUMBERS

- 16.1 Under exceptional circumstances, the Race Committee may permit a boat to use sails carrying a distinguishing number other than that required by RRS 77 and RRS Appendix G. Such permission is only valid if sought in writing before proceeding afloat.

17 DATA PROTECTION

- 17.1 **PRIVACY STATEMENT** The personal information you provide to the organising authority will be used to facilitate your participation in the event. If you have agreed to be bound by the Racing Rules of Sailing and the other rules that govern the event (the rules), the legal basis for processing that personal information is contract. If you are not bound by the rules, the legal basis for processing that personal information is legitimate interest. Your personal information will be stored and used in accordance with the Warsash Sailing Club's privacy policy. When required by the rules, personal information may be shared with the RYA and/or World Sailing. The results of the event and the outcome of any hearing or appeal may be published.

18 RIGHT TO USE NAMES AND LIKENESS

- 18.1 Competitors automatically grant to Warsash Sailing Club, the Blaze Class Association, and their sponsors without payment the right in perpetuity to make, use and show any motion pictures, still pictures and live, taped, or filmed television of or relating to the event.

19 RISK STATEMENT

- 19.1 RRS 3 states: "The responsibility for a boat's decision to participate in a race or to continue racing is hers alone." By participating in this event each competitor agrees and acknowledges that sailing is a potentially dangerous activity with inherent risks. These risks include strong winds and rough seas, sudden changes in weather, failure of equipment, boat handling errors, poor seamanship by other boats, loss of balance on an unstable platform and fatigue resulting in increased risk of injury. Inherent in the sport of sailing is the risk of permanent, catastrophic injury or death by drowning, trauma, hypothermia of other causes. By taking part in the event, each competitor agrees and acknowledges that:
- (a) they are aware of the inherent element of risk involved in the sport and accept responsibility for the exposure of themselves, their crew and their boat to such inherent risk whilst taking part in the event;
 - (b) they are responsible for the safety of themselves, their crew, their boat, and their other property whether afloat or ashore;
 - (c) they accept responsibility for any injury, damage or loss to the extent caused by their own actions or omissions;
 - (d) their boat is in good order, equipped to sail in the event and they are fit to participate;



- (e) the provision of a race management team, patrol boats and other officials and volunteers by the event organiser does not relieve them of their own responsibilities;
- (f) the provision of patrol boat cover is limited to such assistance, particularly in extreme weather conditions, as can be practically provided in the circumstances;
- (g) it is their responsibility to familiarise themselves with any risks specific to this venue or this event drawn to their attention in any rules and information produced for the venue or event and to attend any competitors briefing held for the event.

20 INSURANCE

- 20.1 Each participating boat shall be insured with valid third-party liability insurance with a minimum cover of £3,000,000 per incident or the equivalent.

21 PRIZES

- 21.1 Prizes will be awarded depending on entry numbers.

- 21.2 The minimum number of prizes to be awarded will be:

BLAZE	1 st to 5 th	John Abbott Mid Fleet
	1 st Lady	Endeavour
	1 st Youth	
	1 st Master	
	1 st Grandmaster	
	1 st Great Grandmaster	
	1 st Polyester	

FIRE & HALO Prizes will be awarded to the square root of the number of entries, rounded down, and to a maximum of 3rd place.

22 CANCELLATION

- 22.1 The final decision on whether the event can proceed will be made on Wednesday 7 June at 12:00hrs. If the forecast wind strength causes cancellation of the event, full refunds of the entry fees will be given. Notice of the cancellation will be posted on the WSC website no later than 20:00hrs on Wednesday 7 June.

23 FURTHER INFORMATION

For further information please contact

Admin, Warsash Sailing Club, Shore Road, Warsash, Southampton, SO31 9FS.

Phone 01489 583575 (0930 – 1500 Weekdays).

Email: admin@warsashsc.org.uk.

Web: www.warsashsc.org.uk

24 ADDITIONAL INFORMATION

- 24.1 **SEA SURE** are funding the Saturday evening Social. This will include a free 2 course meal, a free drinks voucher and a Live Band.



Warsash Sailing Club

Notice Of Race

- 24.2** Friday evening meal at Shore House should be ordered and paid for on Friday morning.
- 24.3** Free tea and cake will be available after racing each day.
- 24.4** The club bar should be open after sailing each day.



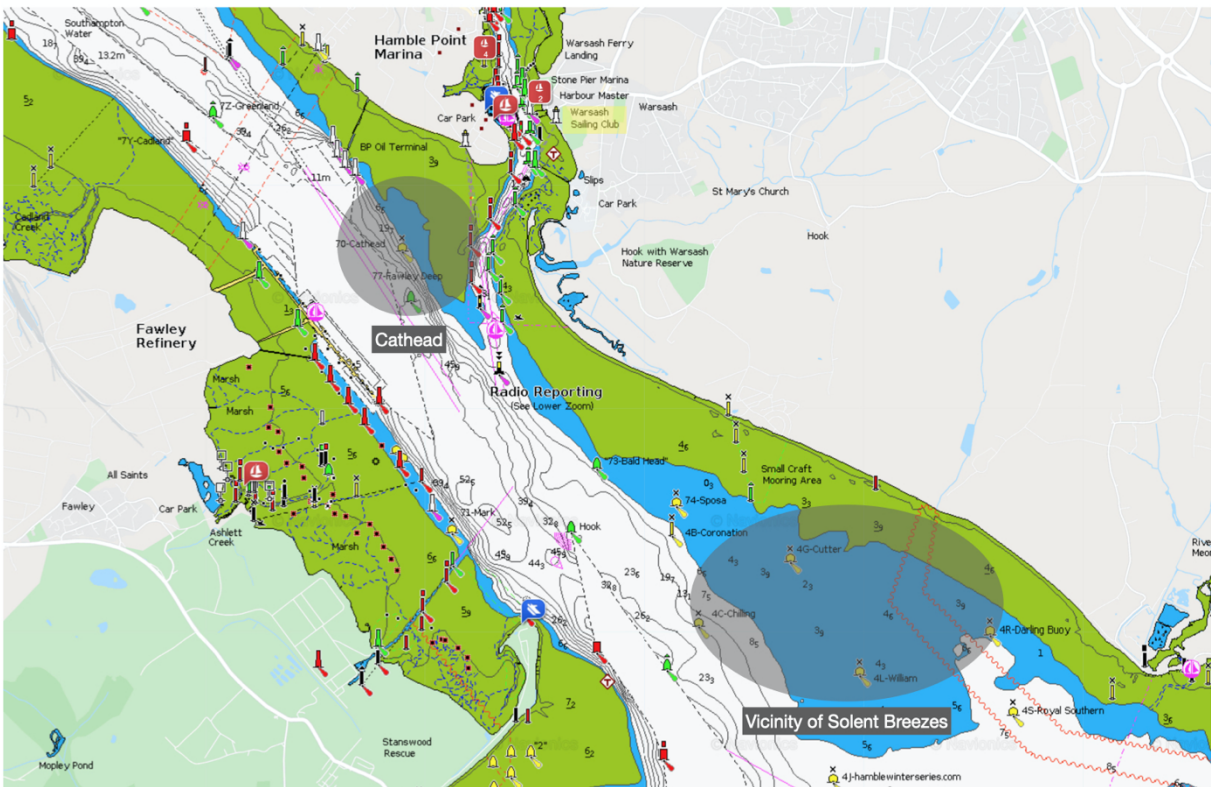
Warsash Sailing Club

Notice Of Race

Addendum 1 - Site Plan



Addendum 2 - Racing Area



Warsash Sailing Club

Shore House, Shore Road, Warsash, Southampton, SO31 9FS, UK

Tel: 01489 583575 Email: admin@warsashsc.org.uk Web: warsashsc.org.uk