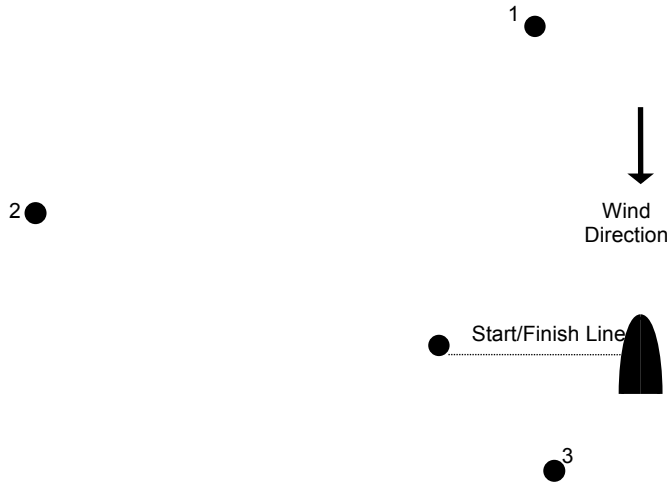


## Outside Starts



## Courses

If no course is displayed then course A applies.  
Repeat the course until 'S' is flown

A	B	C
Start	Start	Start
Mark 1 (P)	Mark 1 (P)	Mark 1 (P)
Mark 2 (P)	Mark 2 (P)	Mark 3 (P)
Mark 3 (P)	Mark 3 (P)	Finish
Finish Line	Finish	
Mark 1 (P)		
Mark 3 (P)		
Finish Line		

There will be two starts – for times see the Sailing Calendar

Fast	1109 and below	<b>D</b>	
Medium/Slow	Over 1110	<b>E</b>	
Optimist		<b>D</b>	

# Warsash Sailing Club



## Dinghy Racing Start Guide and Courses 2018~19

Series will be governed by the Warsash Sailing Club  
Dinghy Racing Instructions 2018~19 and published amendments

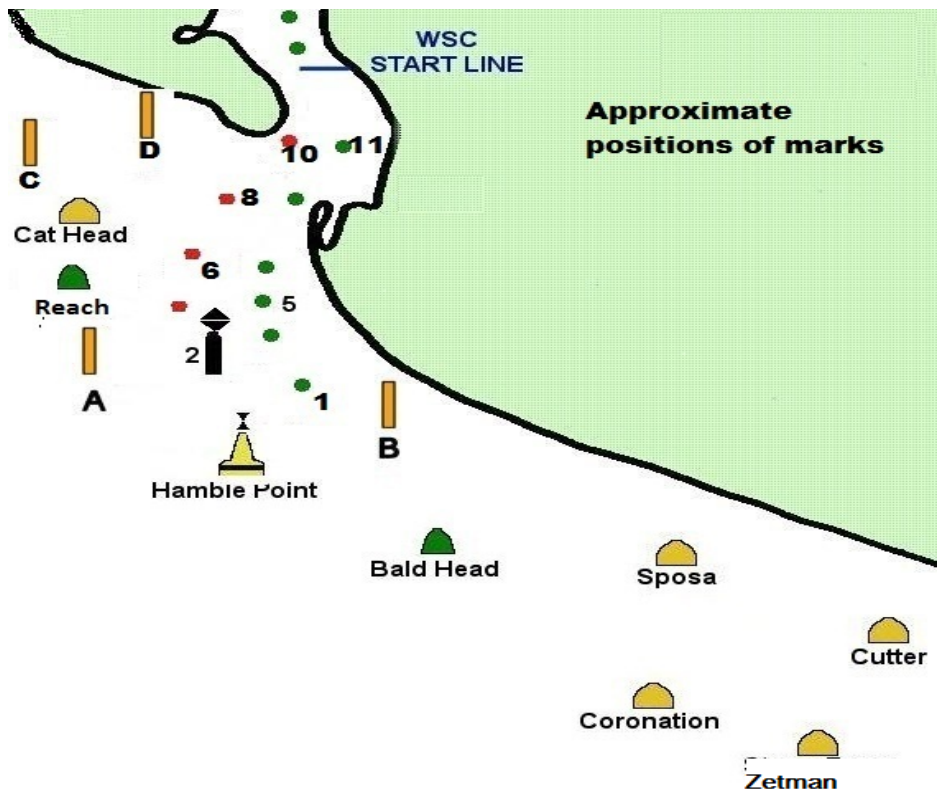
### Class Flags & PYs for all starts on Club line

Class	PY		Flag
Superfast	1026 or less	<b>C</b>	
Fast	1027 - 1109	<b>D</b>	
Medium	1110 - 1209	<b>E</b>	
Slow	1210 +	<b>B</b>	
Fast (Winter & Aussie Series)	1109 and below	<b>D</b>	
Medium/Slow (Winter & Aussie Series)	Over 1109	<b>E</b>	

**The medium and slow fleets will normally start together**  
**Starting Sequence**

Time	Event	Signals		
		Flag	Sound	Light
-5 mins	Warning	'Class' Raised	One	Class 'On'
-4 mins	Preparatory	'P' Raised	One	P 'On'
-1 min		'P' Lowered	One	P 'Off'
0 mins	Starting	'Class' Lowered	One	Class 'Off'

1. Classes will start at **5 minute intervals**, the warning signal will be displayed at the starting signal for the preceding class.
2. **Boats whose warning signal has not been made shall keep clear of the starting area.**
3. If a boat is over the line at the start an extra sound signal will be made and the X flag light will be illuminated.
4. In the event of a general recall, the fleet recalled will restart after the last scheduled start.



Flags		Meaning
N		Race abandoned
L		Special instructions
AP		Race postponed
X		Boat(s) over line
1 <sup>st</sup> Sub		General Recall
S		Finish between boat flying flag S and the adjacent mark
F		Pass adjacent mark and proceed to finish line
S & F	together	Finish at line between Pile 6 / Pile 7

**Notes:**

1. The letter denoting the course will be displayed at the start line along with the number of laps.
2. The part of the course in CAPITAL LETTERS is to be repeated until the number of rounds displayed at the start have been completed. Marks written in lowercase are only rounded once, at the start of the course or as the last mark of the course for the final leg to the finish.
3. If a single letter course is used with an OUTSIDE START only the marks shown in capitals are to be rounded.
4. Check the board on Shore House jetty for course if Code flag 'L' is displayed.
5. Slow handicap fleet should not sail beyond Cat Head/Bald Head areas.

A	Start PILE 2 (S) CAT HEAD (S) PILE 10 (S) Finish	B	Start HAMBLE Pt (S) CAT HEAD (S) PILE 10 (S) Finish	C	Start LAID MK A (P) HAMBLE Pt (P) PILE 5 (P) Finish	D	Start BUOY 11 (S) PILE 1 (S) PILE 2 (S) Finish
E	Start PILE 2 (P) PILE 3 (P) PILE 10 (P) Finish	F	Start PILE 10 (P) CAT HEAD (P) HAMBLE Pt (P) Finish	G	Start PILE 1 (S) BALD HEAD (S) HAMBLE Pt (S) Finish	H	Start HAMBLE Pt (P) BALD HEAD (P) PILE 3 (P) Finish
I	Start PILE 2 (S) LAID MARK D (P) CAT HEAD (P) PILE 2 (P) Finish	J	Start Hambale Pt (P) SPOSA (S) CORONATION(S) HAMBLE Pt (S) Finish	K	Start Hambale Pt (P) BALD HEAD (P) CORONATION(P) SPOSA (P) Finish	M	Start Hambale Pt (P) SPOSA (S) CUTTER (S) ZETMAN (S) Finish
N	Start PILE 3 (P) LAID MK B (S) HAMBLE Pt (S) PILE 2 (S) Finish	P	Start BUOY 11 (S) PILE 6 (S) PILE 10 (S) Finish	Q	Start PILE 2 (S) LAID MARK A (P) HAMBLE Pt (P) PILE 1 (P) Finish	R	Start PILE 10 (P) CAT HEAD (S) LAID MARK C (S) PILE 10 (S) Finish
S	Start PILE 5 (S) HAMBLE Pt (S) CAT HEAD (S) PILE 2 (P) Finish	T	Start PILE 2 (S) CAT HEAD (P) HAMBLE Pt (P) PILE 5 (P) Finish	U	Start Hambale Pt (P) ZETMAN (P) CUTTER (P) SPOSA (P) Finish	V	Start PILE 2 (S) LAID MARK C (P) CAT HEAD (P) HAMBLE Pt (P) Finish
W	Start Hambale Pt (P) SPOSA (S) CUTTER (S) ZETMAN (S) CUTTER (S) ZETMAN (S) Finish	X	Start PILE 1 (S) HAMBLE Pt (S) LAID MK A (S) PILE 2 (S) Finish	Y	Start Bald Head (P) SPOSA (S) CORONATION (P) CUTTER (S) ZETMAN (S) BALD HEAD (S) Finish	Z	Start PILE 2 (S) CAT HEAD (S) LAID MARK C (S) LAID MARK D (S) PILE 2 (P) Finish